

# CLIFTON

Total House Area: 222m<sup>2</sup> (23.89sq.) approx.

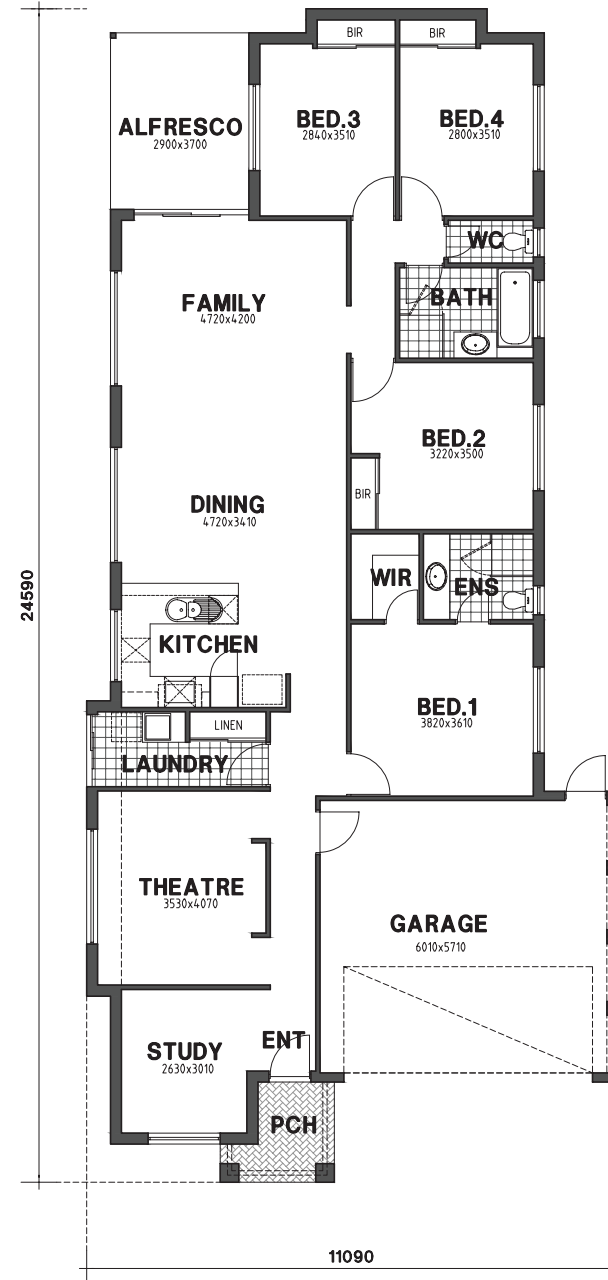
House	169.47m <sup>2</sup>
Garage	37.82m <sup>2</sup>
Porch	3.99m <sup>2</sup>
Alfresco	10.73m <sup>2</sup>
Roof Area	244.44m <sup>2</sup>
Perimeter	69.76ml

## NOTE:

Minimum Block Width = 12.00m

Minimum Block Depth R30 = 30.09m

Minimum Block Depth R25 = 31.09m



This design shall at all times remain the copyright property of Metro Homes (WA) Pty Ltd. Written consent to reproduce this design in either two or three dimensional form must be obtained from Metro Homes (WA) Pty Ltd.