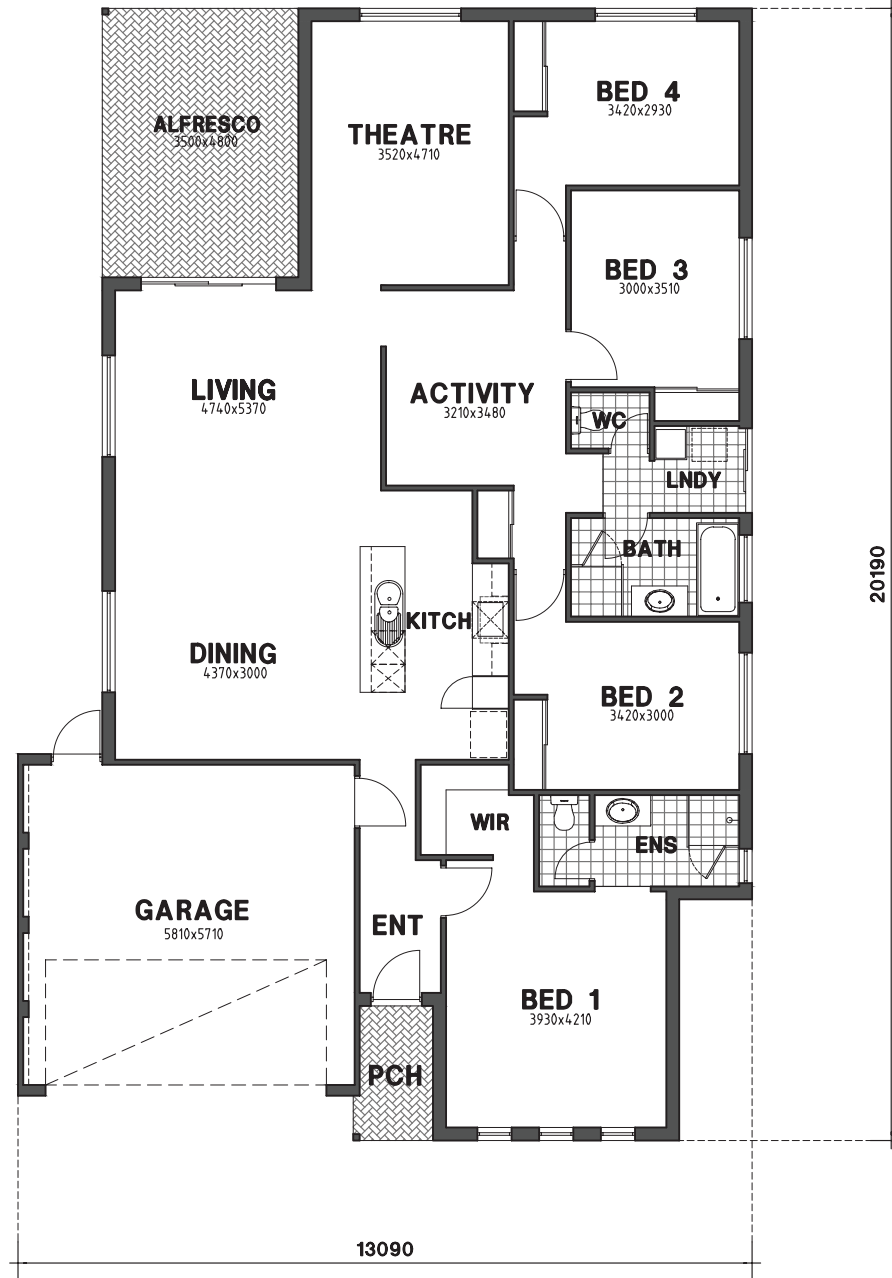


ALDRIDGE

Total House Area:	234m ² (25sq.) approx.
House	178.57m ²
Garage	35.83m ²
Porch	3.23m ²
Alfresco	16.80m ²
Roof Area	261.78m ²
Perimeter	69.76m

NOTE:

- Minimum Block Width = 14.60m
- Minimum Block Depth R30 = 25.69m
- Minimum Block Depth R25 = 26.69m



This design shall at all times remain the copyright property of Metro Homes (WA) Pty Ltd. Written consent to reproduce this design in either two or three dimensional form must be obtained from Metro Homes (WA) Pty Ltd.